

**ROWA<sup>®</sup>phos** used in fresh water and sea-water aquariums reduces the **main reason for problems with algae:**

**phosphate (PO<sub>4</sub>)**

It acts as an adsorbent sponge removing phosphate caused by decomposing food or overfeeding, bringing the concentration back to a natural level and never releasing phosphate back into the water.

Should be used when setting up a new aquarium to avoid phosphate (PO<sub>4</sub>) building up in rocks and gravel.



ROWA Aquaristik GmbH

Heinrich-Hasemeier-Str. 33  
D-49076 Osnabrück

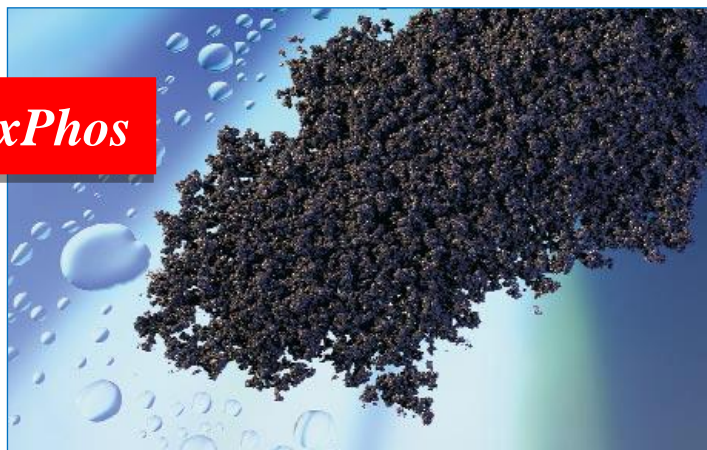
Tel. +49 (0) 541-580 53 570  
Fax +49 (0) 541-580 53 5777

[www.rowa-wasser.de](http://www.rowa-wasser.de)

- Made in Germany -

# ROWA<sup>®</sup>phos

*ExPhos*



## **PO<sub>4</sub> & SiO<sub>2</sub> Adsorber**

*The ultimate in phosphate removal for fresh water & sea-water aquariums*

**ROWA<sup>®</sup>phos ...**

- extreme high phosphate (PO<sub>4</sub>) adsorbent
- based on ferric hydroxide
- needs very little room in the filter system
- simple handling
- **quick visible success** during algae bloom
- no influence on pH after one hour
- **reduces silicate** (SiO<sub>2</sub>)
- no output of substances such as aluminum (can occur when using other products)
- avoids phosphate-related damage to lime synthesis in calcareous algae and stone corals etc.

**ROWA<sup>®</sup>phos** – phosphate and silicate adsorbermaterial

Item no. 040401	<b>100 ml</b>	Item no. 040402	<b>250 ml</b>
-----------------	---------------	-----------------	---------------

Item no. 040405	<b>500 ml</b>	Item no. 040410	<b>1000 ml</b>
-----------------	---------------	-----------------	----------------